



SCG10 (phospho Ser73) Polyclonal Antibody

Catalog No	YP-Ab-03606
Isotype	IgG
Reactivity	Human;Mouse;Rat
Applications	IHC;IF;ELISA
Gene Name	STMN2
Protein Name	Stathmin-2
Immunogen	Synthesized phospho-peptide around the phosphorylation site of human SCG10 (phospho Ser73)
Specificity	Phospho-SCG10 (S73) Polyclonal Antibody detects endogenous levels of SCG10 protein only when phosphorylated at S73.
Formulation	Liquid in PBS containing 50% glycerol, 0.5% BSA and 0.02% sodium azide.
Source	Polyclonal, Rabbit,IgG
Purification	The antibody was affinity-purified from rabbit antiserum by affinity-chromatography using epitope-specific immunogen.
Dilution	IHC: 1/100 - 1/300. ELISA: 1/5000.. IF 1:50-200
Concentration	1 mg/ml
Purity	≥90%
Storage Stability	-20°C/1 year
Synonyms	STMN2; SCG10; SCGN10; Stathmin-2; Superior cervical ganglion-10 protein; Protein SCG10
Observed Band	
Cell Pathway	Cytoplasm . Cytoplasm, perinuclear region . Cell projection, growth cone. Membrane ; Peripheral membrane protein ; Cytoplasmic side . Cell projection, axon. Golgi apparatus. Endosome . Cell projection, lamellipodium. Associated with punctate structures in the perinuclear cytoplasm, axons, and growth cones of developing neurons. SCG10 exists in both soluble and membrane-bound forms. Colocalized with CIB1 in neurites of developing hippocampal primary neurons (By similarity). Colocalized with CIB1 in the cell body, neuritis and growth cones of neurons. Colocalized with CIB1 to the leading edge of lamellipodia. .
Tissue Specificity	Neuron specific.
Function	function:May play a role in neuronal differentiation, and in modulating membrane interaction with the cytoskeleton during neurite outgrowth.,PTM:Sumoylated.,similarity:Belongs to the stathmin family.,subcellular location:Associated with punctate structures in the perinuclear cytoplasm, axons, and growth cones of developing neurons. SCG10 exists in both soluble and membrane-bound forms.,tissue specificity:Neuron specific.,

**Background**

This gene encodes a member of the stathmin family of phosphoproteins. Stathmin proteins function in microtubule dynamics and signal transduction. The encoded protein plays a regulatory role in neuronal growth and is also thought to be involved in osteogenesis. Reductions in the expression of this gene have been associated with Down's syndrome and Alzheimer's disease. Alternatively spliced transcript variants have been observed for this gene. A pseudogene of this gene is located on the long arm of chromosome 6. [provided by RefSeq, Nov 2010],

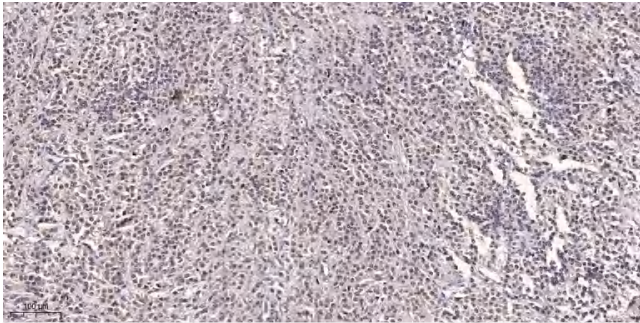
matters needing attention

Avoid repeated freezing and thawing!

Usage suggestions

This product can be used in immunological reaction related experiments. For more information, please consult technical personnel.

Products Images



Immunohistochemical analysis of paraffin-embedded human small intestinal carcinoma tissue. 1,primary Antibody was diluted at 1:200(4° overnight). 2, Sodium citrate pH 6.0 was used for antigen retrieval(>98° C,20min). 3,Secondary antibody was diluted at 1:200